



TRNSYS 17

3D Building Project – Import, Export and Reimport

Create 3D building project:

1. Create Geometry in SketchUp (.idf file)
2. Import .idf file into TRNSYS using TRNBuilds *Import TRNSYS3d file* function (see Figure 1) or Simulation Studio using *New 3D Building Project Wizard* (see Figure 2)
3. Edit and save project as .bui / .b17 file

Adapt geometry of existing 3D building project:

4. *Export TRNSYS3d file* in TRNBuild (Figure 3) to create new .idf file containing changes made in TRNBuild
5. Open new .idf file in SketchUp using *Open TRNSYS3d Input File* (see Figure 4)
6. Adapt geometry
7. Do steps 2. and 3.

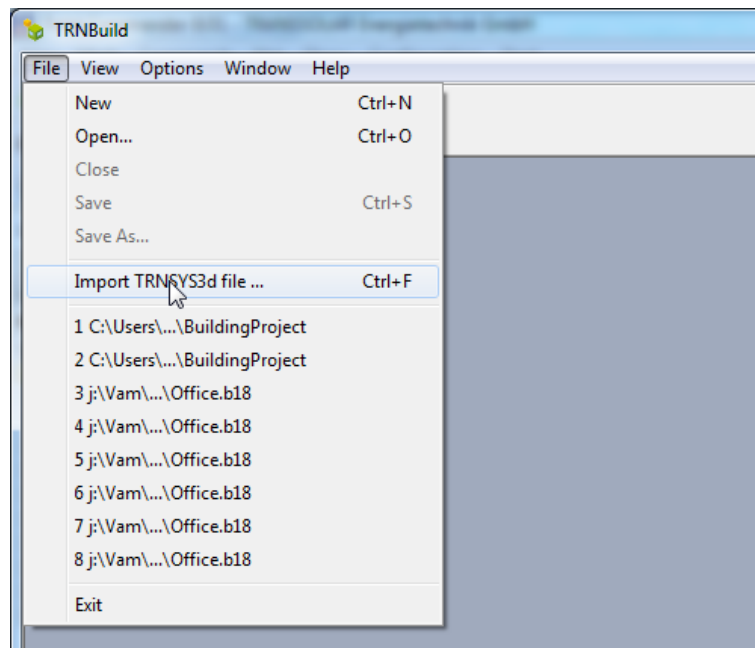


Figure 1: Import TRNSYS3d file using TRNBuild

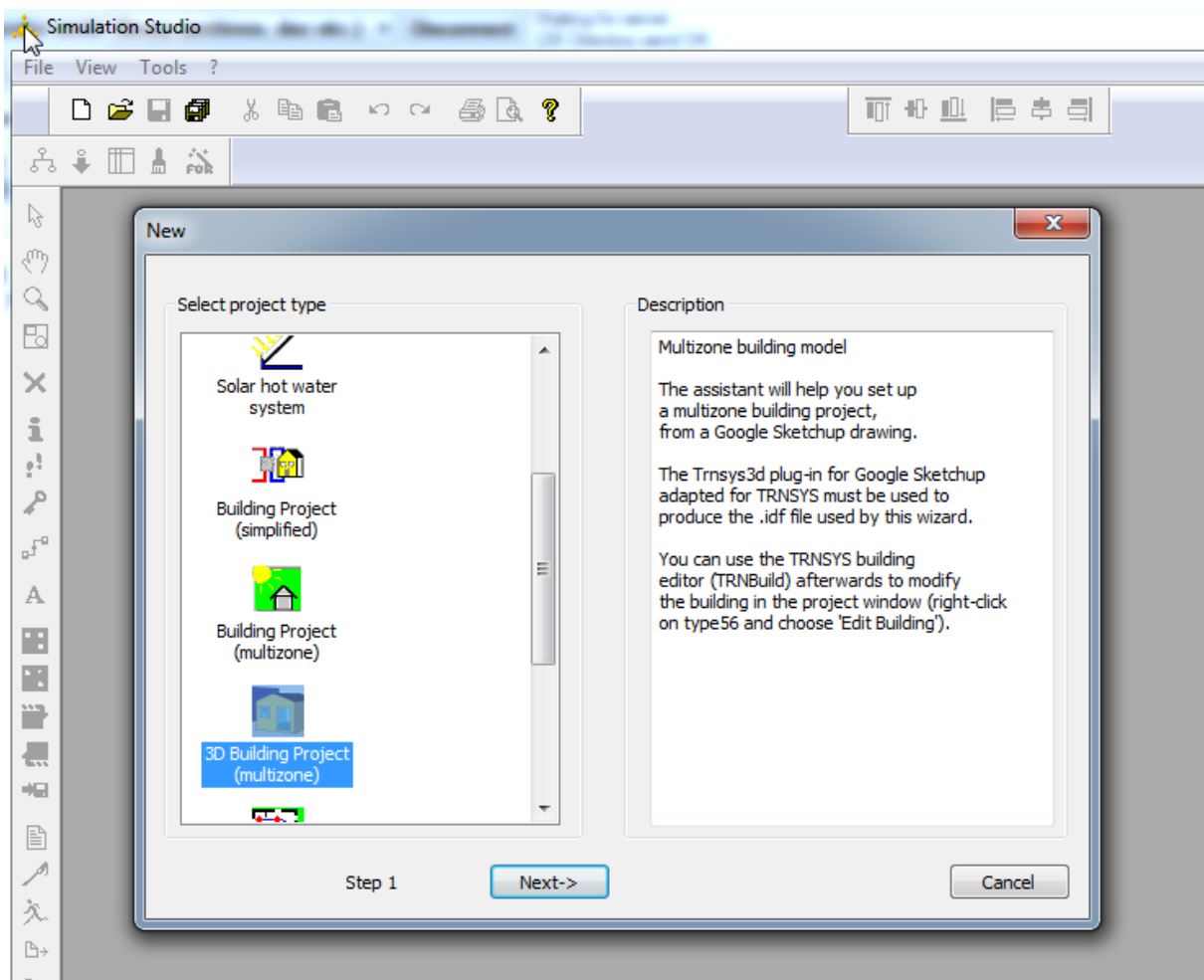


Figure 2: Import TRNSYS3d file using Wizard in Simulation Studio

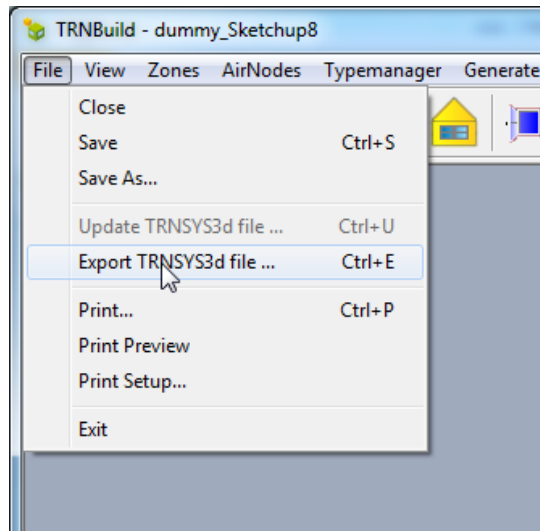


Figure 3: Export 3D project in TRNBuild

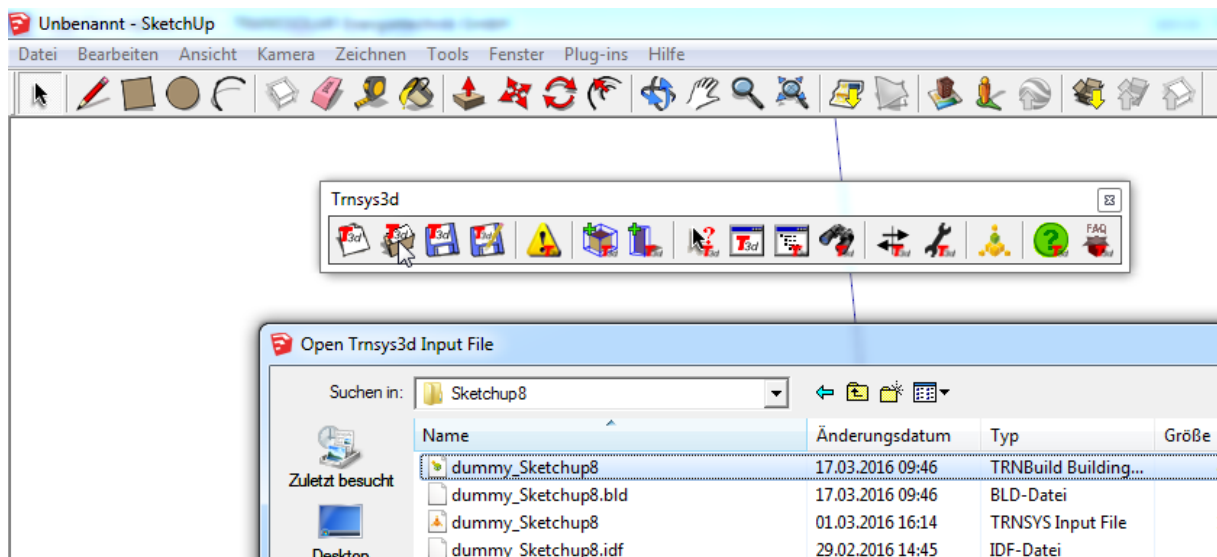


Figure 4: Open existing .idf file in SketchUp