



TRNSYS 17

3D Building Project – Import, Export and Reimport

Create 3D building project:

1. Create Geometry in SketchUp and save TRNSYS3d file as `_V1.idf` (see Figure 1)
2. Import `_V1.idf` file into TRNSYS using TRNBuilds *Import TRNSYS3d file* function (see Figure 2) or Simulation Studio using *New 3D Building Project Wizard* (see Figure 3)
3. Edit and save project as `.b17` file
All information out of .idf file is now included in .b17 file

Adapt geometry of existing 3D building project:

4. *Export TRNSYS3d file* in TRNBuild (Figure 4) to create `_V2.idf` file containing changes made in TRNBuild
5. Open `_V2.idf` file in SketchUp using *Open TRNSYS3d Input File* (see Figure 5)
All information out of .b17 file is now included in _V2.idf file
6. Adapt geometry, save changes in new TRNSYS3d file `_V3.idf`
7. Do step 2 again using the new `_V3.idf` file
Changes done in SketchUp are now again included in new .b17 file

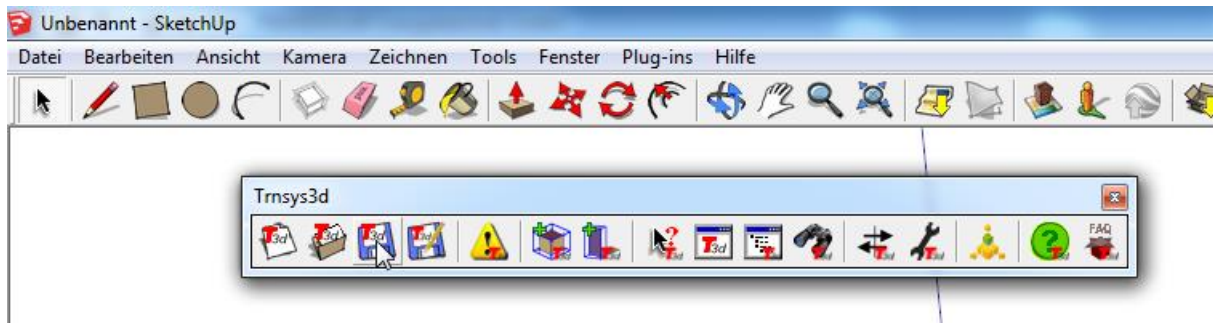


Figure 1: Save new TRNSYS3d file as .idf in SketchUp

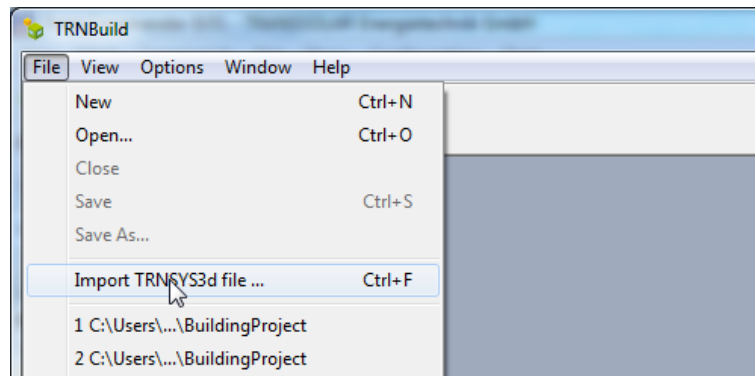


Figure 2: Import TRNSYS3d file using TRNBuild

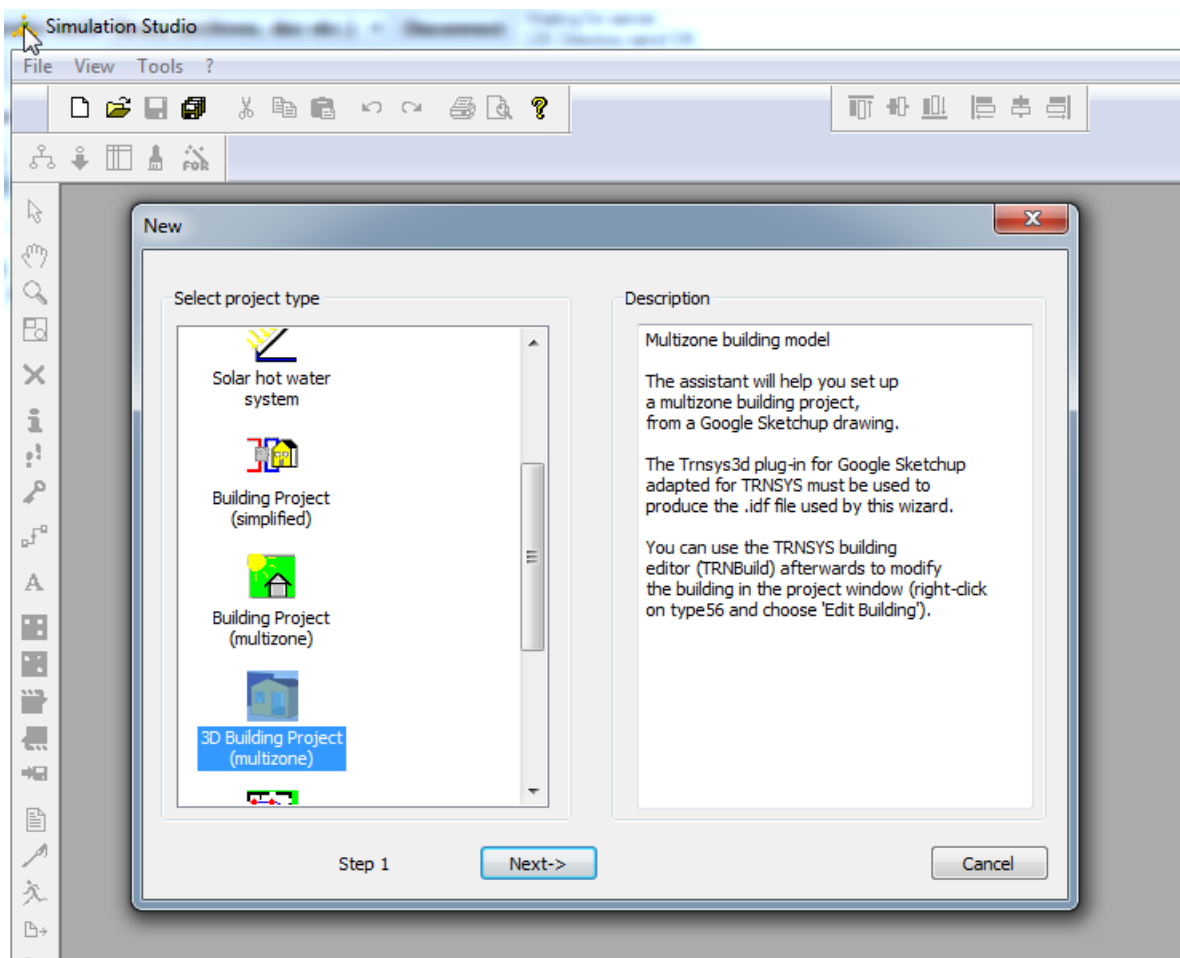


Figure 3: Import TRNSYS3d file using Wizard in Simulation Studio

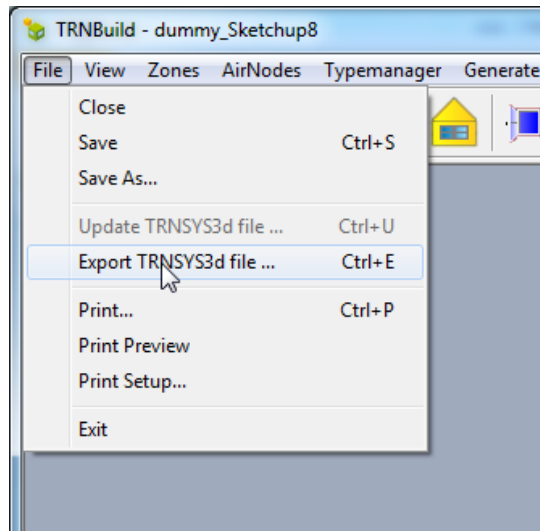


Figure 4: Export 3D project in TRNBuild

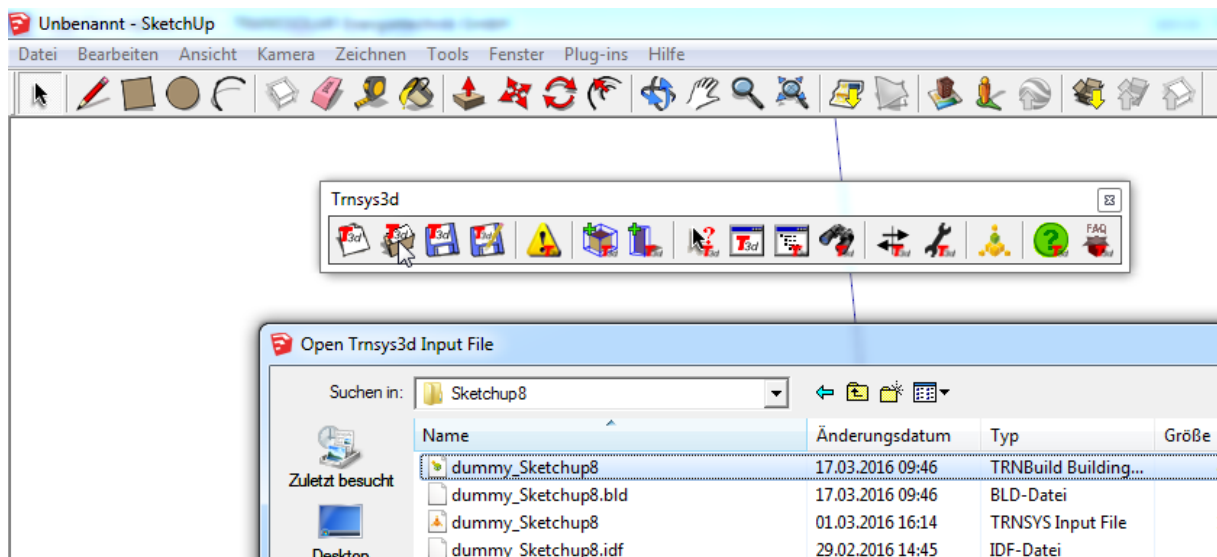


Figure 5: Open existing .idf file in SketchUp